



Histone H4 Lysine 20 (H4K20) Methylation, Expanding the Signaling Potential of the Proteome One Methyl Moiety at a Time*

Rick van Nuland and Or Gozani†

Covalent post-translational modifications (PTMs) of proteins can regulate the structural and functional state of a protein in the absence of primary changes in the underlying sequence. Common PTMs include phosphorylation, acetylation, and methylation. Histone proteins are critical regulators of the genome and are subject to a highly abundant and diverse array of PTMs. To highlight the functional complexity added to the proteome by lysine methylation signaling, here we will focus on lysine methylation of histone proteins, an important modification in the regulation of chromatin and epigenetic processes. We review the signaling pathways and functions associated with a single residue, H4K20, as a model chromatin and clinically important mark that regulates biological processes ranging from the DNA damage response and DNA replication to gene expression and silencing. *Molecular & Cellular Proteomics* 15: 10.1074/mcp.R115.054742, 755–764, 2016.

The human genome consists of greater than 20,000 protein-coding genes (1). Additionally, most genes give rise to multiple isoforms due to alternative splicing (2). Further complexity of the proteome is achieved by the reversible covalent post-translational modifications (PTMs)¹ of proteins by chemical moieties such as phosphorylation, acetylation, and methylation. These covalent modifications occur largely on the side chains of distinct amino acid residues and regulate protein function by diverse mechanisms that together greatly expands the complexity of the proteome (3).

Histones are some of the most abundant proteins in eukaryotic cells. Two copies of histone H2A, H2B, H3, and H4 form an octameric structure that is wrapped by ~147 bp of double-stranded DNA (dsDNA) to form the nucleosome, the

This is an open access article under the [CC BY](https://creativecommons.org/licenses/by/4.0/) license.

From the Department of Biology, Stanford University, Stanford, California 94305

Received August, 15, 2015, and in revised form, November 15, 2015

Published, MCP Papers in Press, November 23, 2015, DOI 10.1074/mcp.R115.054742

Author contributions: R.V. and O.G. wrote the paper.

¹ The abbreviations used are: PTM, post-translational modification; PCNA, proliferating cell nuclear antigen; ORI, origins of replication; BAH, bromo-adjacent homology; ORC, origin of replication complex; MEF, mouse embryonic fibroblast; MGS, Meier-Gorlin syndrome.

core structural unit of chromatin and the first step in packaging of the genome (4). Histone proteins are highly modified with the majority of PTMs occurring within the highly charged and unstructured N- and C-terminal histone tail regions (5). Here we will focus on lysine methylation of histone proteins, an important modification that was first identified on histones in the 1960s and is now appreciated to fundamentally regulate chromatin dynamics (6).

Proteins are reversibly methylated on the nitrogen side chain of lysine residues (Fig. 1). This reaction, although subtly changing the primary structure of the modified peptide, greatly increases the information encoded within the molecule. Lysine residues can accept up to three methyl groups, forming mono-, di-, and tri-methylated derivatives (referred to here as Kme1, Kme2, and Kme3, respectively; Fig. 1), with unique activities frequently being coupled to the specific extent of methylation on the lysine residue (5, 7, 8). Here, when referring to sites of histone methylation, we will use nomenclature in which the histone, residue and number, and type of methylation are sequentially denoted (9). For example, me1 of histone H3 at lysine 4 will be referred to H3K4me1. In humans, the canonical lysine methylation sites on the core histones are H3K4, H3K9, H3K27, H3K36, H3K79, and H4K20 (10). Here, to highlight the functional complexity that can be added to the proteome via lysine methylation, we focus on the signaling pathways and functions associated with methylation of a single residue, H4K20, as a model chromatin and clinically important mark that regulates diverse biological processes ranging from the DNA damage response and DNA replication to gene expression and silencing. For more detailed and comprehensive reviews of H4K20 methylation biology, we refer the reader to two excellent reviews, Refs. 11, 12.

Methylation of Histone H4 at Lysine 20 (H4K20me)—Lysine 20 is the major site of methylation on histone H4. Depending on the cell type, up to ~80% of H4 molecules can be dimethylated, whereas H4K20me1 and H4K20me3 are generally less abundant, for example being present on 10 and 5% of nucleosomes in asynchronous HeLa cells, respectively, with similar ratios observed in mouse embryonic fibroblasts (MEFs) and other cell types (13–16). Three distinct SET domains containing lysine (K) methyltransferase (KMT) enzymes, SETD8 (SET8, PR-SET7), SUV4-20H1, and SUV4-20H2, are

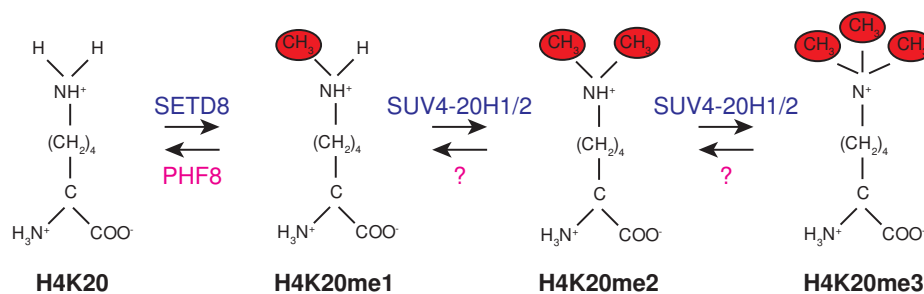


FIG. 1. Chemical structure of lysine and its methylated derivatives. Lysine can be mono-, di-, and trimethylated (red). Lysine methyltransferase enzymes (blue) catalyze the conversion of H4K20 into the methylated states. Demethylase enzymes (pink) can remove methyl groups from lysines. Currently there are no demethylase enzymes known for di-, and trimethylated H4K20.

responsible for the generation of the three different methyl states of H4K20 (17–20). SETD8 was identified as the first KMT for H4K20, and genetic ablation of *Setd8* in flies completely abolished all three methylation states, initially suggesting that it might catalyze mono-, di-, and tri-methylation (17, 18). However, biochemical analysis showed that SETD8 only catalyzed the addition of one methyl moiety, converting unmodified H4K20 to H4K20me1. Structural studies provided the molecular basis for this specificity, demonstrating that the active site of SETD8 is not able to accommodate a lysine carrying more than a single methyl group (21, 22). Two related enzymes, SUV4-20H1 and SUV4-20H2, also methylate H4K20 and are the enzymes responsible for the conversion of SETD8-generated H4K20me1 into H4K20me2 and H4K20me3 (20). Indeed, the deletion of both enzymes in MEFs led to a dramatic and specific loss of H4K20me2 and H4K20me3 levels and a concomitant increase in the levels of H4K20me1 (19); these results suggested that the accumulation of H4K20me1 was a result of failure in the *Suv4-20h1/Suv4h2* double knock-out cells to convert H4K20me1 to the higher methylated states. Similar results were observed upon depletion of the two homologous proteins, *suv420h1/h2* in the zebrafish *Danio rerio* (23). There are reports of other KMTs such as NSD2/MMSET/WHSC1 having activity on H4K20 (24); however, careful analysis of NSD2-methylated histones demonstrated that this enzyme has absolutely no activity on H4K20 (25, 26), and similar analyses have ruled out several other putative H4K20 methyltransferases (25–29).² Thus, in higher eukaryotes, SETD8 appears to be the sole mono-methyltransferase for H4K20, and successive methylation of H4K20me1 by SUV4-20H1 and SUV4-20H2 generates the preponderance of global H4K20me2 and H4K20me3.

SUV4-20H1 and SUV4-20H2 share a high degree of sequence similarity in their catalytic SET domain (20), and consistent with the cellular studies (13), *in vitro* methylation assays using recombinant SUV4-20H1 and SUV4-20H2 indicate that both proteins catalyze H4K20me2 with similar kinetics and that these enzymes are more active on H4K20me1 as substrate than on unmethylated H4K20 (20, 30–32). Nonetheless,

deletion of the individual enzymes in MEFs showed clear differences with respect to H4K20 methylation as *Suv4-20h1* deletion resulted in an ~60% decrease in H4K20me2 levels without affecting H4K20me3. In contrast, genetic ablation of *Suv4-20h2* largely eradicated H4K20me3 but did not have an impact on global levels of H4K20me2 (13). It is worth noting that both *Suv4-20h1* and *Suv4-20h2* are capable of mono-methylation but with a 3-fold lower activity compared with their activity on mono-methylated peptides and a 250-fold lower activity relative to SETD8. The molecular basis for this specificity was revealed in structural studies on the SET domain of mouse SUV4-20H2, which showed that a single methyl group on the substrate lysine helps to lock the lysine in place in the active site (31, 32). Peptides containing an unmodified lysine would therefore be oriented in a less optimal position rendering mono-methylation inefficient (31, 32). With respect to tri-methylation, a significant structural rearrangement of the active site has to take place in order to accommodate an H4K20me3 peptide, which is energetically unfavorable, potentially explaining why this activity is difficult to detect *in vitro* when utilizing the SET domains of SUV4-20H1 and SUV4-20H2 (31, 32). The discrepancy between the *in vitro* and *in vivo* data argues that catalytic specificity of the SUV4-20H1 and SUV4-20H2 does not solely come from the SET domain and is also influenced by domains outside the SET domain and/or differential interacting proteins. Thus, SUV4-20H1 and SUV4-20H2 are both di-methyltransferases *in vitro*, but we have much to learn in order to understand how H4K20me3 is regulated by SUV4-20H1 and SUV4-20H2 *in vivo*.

In multicellular organisms, H4K20 methylation appears to be important for development and organismal viability. Specifically, knock-out *Setd8* mouse embryos die before they reach the 8-cell stage, and flies lacking *Setd8* have developmental defects and only make it into the late larval stage (17, 18, 33). However, it is worth noting that SETD8 has non-histone substrates that may contribute to the knock-out phenotype (see below). Indeed, flies expressing H4 that contains a K20A substitution display significant developmental delay (24–48 h) and have significant death at the larval stage (46%), but overall they have a less severe phenotype than the *Setd8*

² O. Gozani, unpublished observations.

knock-out flies, in which 100% death at the larval stage is observed (17, 18, 34). *Suv4-20h1/Suv4-20h2* double knock-out mice are born at sub-Mendelian ratios, have significant perinatal death, and upon birth are noticeably smaller than control littermates (13). A similar phenotype has been described for the single deletion of *Suv4-20h1*. However, *Suv4-20h2* deletion alone is compatible with life, and the mice seem to develop normally (13). This striking difference may in part be attributed to the more restricted expression pattern of SUV4-20H2 in the mouse embryo relative to SUV4-20H1, which is ubiquitously expressed throughout the embryo (13). Taken together, the data in higher eukaryotes support the notion that establishing a proper H4K20me pattern is important for development, yet the non-essential role for SUV4-20H2 in this process requires additional studies as does separating the function of the individual KMTs *versus* the specific methylation event on H4.

In mice, the deletion of *Setd8* gives a much more severe phenotype as compared with the double deletion of *Suv4-20h1* and *Suv4-20h2* (13, 33). This suggests that loss of all methylation states on H4K20 is more detrimental than the loss of only H4K20me₂ and H4K20me₃. At the same time, SETD8 has also been shown to methylate non-histone substrates such as the tumor suppressor p53 (35), the protein NUMB (36), and proliferating cell nuclear antigen (PCNA) (37). To date, a non-histone target for SUV4-20H1 and SUV4-20H2 has yet to be identified. SETD8 mono-methylates p53 on lysine 382 to suppress p53-mediated transcriptional activation of highly responsive target genes (35). In addition to p53, SETD8 methylates PCNA, which is reported to stabilize PCNA, and promotes its function in DNA replication and DNA damage (37). SETD8 methylation of NUMB also impacts p53 functions, suggesting SETD8 integrates multiple pathways to regulate the key tumor suppressor p53. Together, these studies indicate that SETD8 deletion phenotypes are likely due to a combination in the absence of H4K20 methylation as well as SETD8 functions in non-histone methyl-lysine signaling pathways.

Lysine methylation, although a relatively stable modification, is dynamic and is reversed by lysine demethylase enzymes (38). The PHD and JUMONJI domain containing protein PHF8, which was originally identified as a demethylase for H3K9me_{1/2} and H3K27me_{1/2} (39), is the first identified demethylase that is active on H4K20. Specifically, PHF8, which is not active on H4K20-methylated peptides, demethylates H4K20me₁ in the context of nucleosomes (40, 41). Overexpression of PHF8 in U2OS cells reduced H4K20me₁ and depletion of PHF8 led to an increase in H4K20me₁ signal at the G₂/M- and G₁-phase of the cell cycle. Why PHF8 is active on dimethyl-lysines on H3K9 and H3K27 but not H4K20 is not understood. Regardless, these studies suggest that H4K20me₁ levels can be dynamically regulated by demethylation, and it may only be a matter of time until demethylases of H4K20me_{2/3} are discovered.

It is becoming increasingly clear that cross-talk between histone modifications plays an important role in chromatin signaling. For instance, double knock-out of the H3K9 methyltransferases *Suv39h1* and *Suv39h2* in MEFs depletes the H3K9me₃ signal and also abolishes H4K20me₃ signals at pericentric heterochromatin without affecting H4K20me_{1/2} (20, 42, 43). However, H3K9me₃ signals persist at DAPI-dense foci in cells in the absence of SUV4-20H1 and SUV4-20H2. Interestingly the C-terminal domain of SUV4-20H2 can bind to isoforms of HP1, key components of heterochromatin, and through their chromodomains can direct the binders of H3K9me₃ (20, 42–44). This suggests a model in which H3K9me₃ recruitment of HP1 brings in SUV4-20H2 to establish an H4K20me₃ landscape at heterochromatin. The molecular function of H4K20me (and what binds to this mark) in heterochromatin formation is a question that should be further elucidated over the next several years. A different variant of cross-talk exists between methylation at H4K20 and acetylation at H4K16. These marks are mutually restrictive on fly chromosomes, and the H4K16ac-containing peptide serves as a less efficient substrate for methylation by SETD8 than unmodified peptide (17). However, proteomic analysis of histone PTMs present on nucleosomes purified from HeLa cells demonstrated the co-occurrence of H4K16ac and H4K20me₂ (15). One intriguing speculation is that each mark modulates the ability of reader domains for the other mark. For example, might acetylation at H4K16 dynamically regulate the binding of a reader of H4K20me? To date, such a case has not been identified, but certainly cross-talk between PTMs present on histones and chromatin-regulatory factors would provide for a complex new layer in the regulation of the genome.

H4K20 Methylation and the Cell Cycle—H4K20 methylation levels, for example H4K20me₁, are quite dynamic across the cell cycle (15). In late G₁, the levels of H4K20me₁ begin to decline, and H4K20me₁ levels are lowest during S-phase. After the completion of DNA replication, H4K20me₁ levels start to increase and peak during mitosis (see Fig. 2) (15, 33). These observations suggested that the changes in H4K20me₁ are due to parallel cell cycle changes in SETD8 protein levels. In this regard, SETD8 was found to be degraded in late G₁-phase by the proteasome through CRL4^{Cdt2} ubiquitin-mediated destruction (45–50). Like several other cell cycle-regulated proteins, SETD8 carries two PCNA-interacting protein domains (51). The second PCNA-interacting protein domain of SETD8 mediates the interaction with PCNA in cells and is required for degradation of SETD8. Taken together, SETD8 and its product H4K20me₁ are dynamically regulated throughout the cell cycle, and the drop in H4K20me₁ levels in S-phase is likely a direct consequence of the active degradation of SETD8. Other possible mechanisms by which H4K20me₁ levels might be regulated include cell cycle-regulated demethylation by PHF8 (40, 41) or other histone lysine demethylase enzymes (KDMs) and by conversion of H4K20me₁ to H4K20me₂; in this regard, we have observed

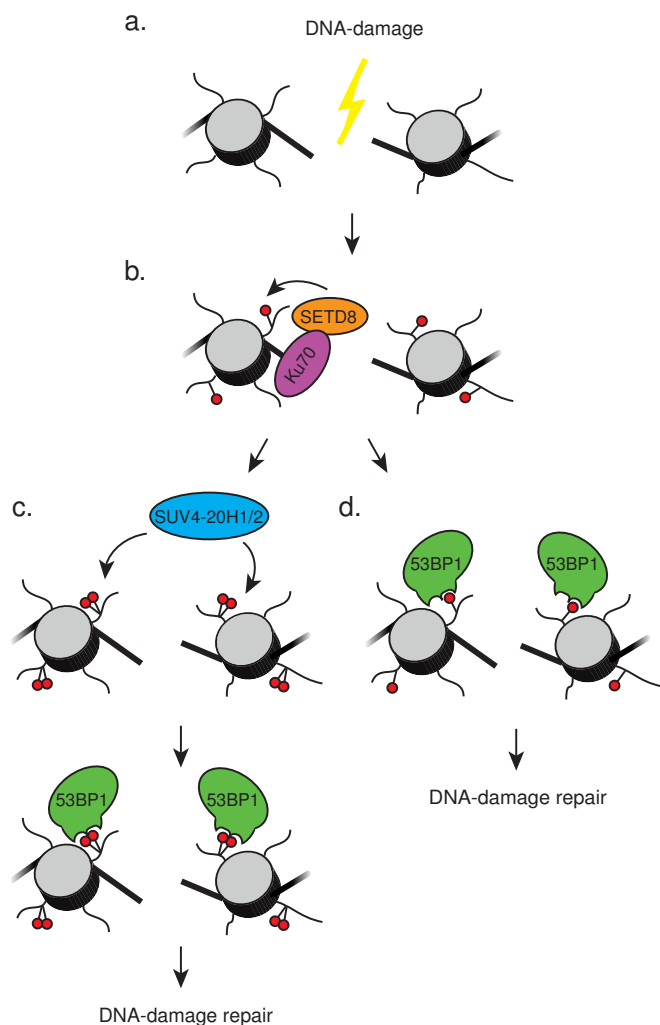


FIG. 2. H4K20me2 stabilizes 53BP1 on sites of DNA-damage through its Tudor domain. *a* and *b*, upon DNA-damage Ku70 (*purple*) binds to the exposed DNA-ends and recruits Set8 (*orange*). SETD8 mono-methylates H4K20 (*red lollipop*) at the site of damage. *c*, subsequently SUV4-20H1 and/or SUV4-20H2 (*blue*) use the H4K20me1 as a substrate and convert in into H4K20me2 (*double-red lollipops*). 53BP1 (*green*) binds to sites of damage and gets stabilized on chromatin by directly interacting with H4K20me2 through its Tudor domain followed by other proteins in the DNA-damage repair pathway. *d*, alternatively, H4K20me1 is stabilizing 53BP1 at the sites of damage and induces DNA-damage repair.

cell cycle-regulated changes in H4K20me2 levels, with the peak in H4K20me2 occurring in late G₁/early S-phase, the same time that H4K20me1 levels decrease,³ consistent with those observed in Ref. 15.

H4K20 Methylation and the DNA Damage Response—H4K20 methylation, in diverse organisms and in an evolutionarily conserved manner, is implicated in the DNA damage response. In the fission yeast *Schizosaccharomyces pombe*, strains carrying a deletion of the H4K20 KMT *set9* (that H4K20

methylation) are hypersensitive to DNA-damaging agents (52). A similar phenotype was observed in strains expressing an H4K20R mutant allele, indicating a direct role for set9-mediated H4K20 methylation in the DNA damage response (rather than a different set9 target, for example). In mammalian cells, depletion of SETD8 results in the formation of γ H2AX foci (a hallmark of DNA damage) and increased sensitivity to a variety of genotoxic stresses (33, 53). In addition, *Suv4-20h1/Suv4-20h2* double knock-out MEFs are sensitive to DNA-damaging agents and display an increased number of chromosomal breaks relative to control MEFs in response to DNA damage (13). In flies, *Setd8* deletion is lethal, and the sensitivity of flies expressing the substitution mutant H4K20A to DNA damage requires further investigation (17, 18, 34). Overall, the data argue that H4K20 methylation plays an important and evolutionary conserved role in the DNA-damage response.

The different methylation states of H4K20me can be bound by specific reader domains, which can distinguish between the site and the degree of methylation (for an overview of several reported H4K20-binding proteins, see Table I). Reader domains typically contain a hydrophobic pocket made up of two to four aromatic residues that interact with the methylated lysine as well as make additional contacts with the sequence surrounding the methylated residue (8, 54). The recruitment of factors involved in the DNA-damage response involves the interaction between reader domain and histone modifications (55). 53BP1 and its yeast homolog Crb2 are key proteins in DNA damage-signaling pathways (for example, 53BP1 associates with sites of DNA damage at an early stage in the repair pathway) that contain a conserved tandem tudor domain (52, 56, 57). This domain on both proteins binds to synthetic histone H4 peptides that are mono- and di-methylated at Lys-20 with a slight preference for di-methyl *versus* mono-methyl peptides. Consistent with these observations, the reduction of SETD8 and the expression of a catalytically inactive mutant enzyme both result in reduced formation of 53BP1 foci at DNA damage sites (13, 48). Furthermore, SUV4-20H1 and SUV4-20H2 are both required for 53BP1 binding at defined DNA double strand break sites generated by a site-specific endonuclease induction system (58). Thus, although the specific contribution of H4K20me1 *versus* H4K20me2 in stabilizing 53BP1 at DNA damage foci remains to be fully elucidated, it is clear that both modification states, via 53BP1, play an important role in the cellular response to DNA damage. In fission yeast, Crb2 localization to DNA damage sites is greatly reduced in the Δ *set9* strain that lacks H4K20 methylation (52), lending further support for an evolutionary conserved mechanism linking H4K20me and the DNA damage response together through a direct interaction between tandem tudor domain-containing proteins and H4K20me1/2.

H4K20 Methylation and DNA Replication—The faithful and precise duplication of the genome in S-phase is essential for cell division and organismal development. The replication ma-

³ A. Kuo and O. Gozani, unpublished observations.

TABLE I
Reported reader domains for H4K20me

Modification	Reader	Domain	K_d	Function	Ref.
H4K20me1	53BP1	Tandem tudor	52.9 μM	DNA damage response	56
	L3MBTL1	3 \times MBT	138 μM	Txpn repression	77
	L3MBTL2	4 \times MBT	14 μM	Txpn repression	83
	MSL3	Chromo	10–18 μM	Chromatin remodeling; txpn regulation	84
	spPdp1	PWWP	42.7 mM	H4K20 methylation	85, 86
H4K20me2	53BP1	Tandem tudor	19.7 μM	DNA damage response	56
	spCrb2	Tandem tudor		DNA damage response	57
	JMJD2A	Tandem tudor	2 μM	Demethylation; txpn regulation; DNA damage	87, 88
	L3MBTL1	3 \times MBT	211 μM	Txpn repression	77
	L3MBTL2	4 \times MBT	11 μM	Txpn repression	83
	ORC1	BAH	5.2 μM	DNA replication licensing	23
	spPdp1	PWWP	19.8 mM	H4K20 methylation	85, 86
	LBR	Tudor		Formation of nuclear peripheral heterochromatin	89
	PHF20	Tudor			76
H4K20me3	ORCA	WD40		DNA replication licensing	64, 90
	JMJD2A	Tandem tudor	0.4 μM	Demethylation; txpn regulation; DNA damage	87
	spPdp1	PWWP	6 mM	H4K20 methylation	85, 86

chinery fires only once per cell cycle from distinct genomic sites termed origins of replication (ORI). During the G_1 phase of the cell cycle, a pre-replication complex, which consists of the origin of replication complex (ORC), the minichromosome maintenance complex (MCM), and two additional factors named Cdc6 and Cdt1 form at ORIs throughout the genome (59). In yeast, ORIs can be identified due to a defined DNA sequence element. However, in higher eukaryotes a similar element or other type of DNA sequence motif has yet to be identified, and rather it is proposed that chromatin modifications might aid in specifying metazoan ORIs, potentially via recruitment of components of the replication machinery (60).

H4K20me plays an important role in cell cycle progression. For instance, double knock-out *Suv4-20h1/2*^{-/-} MEFs proliferate slower than wild-type MEFs, which is likely due to a block in the G_1 - to S-phase transition and delayed S-phase entry (13). Cells depleted of SETD8 also show reduced proliferation rates and accumulate in S-phase, and the cells that do make it into the G_2 -phase fail to go through mitosis, consistent with them carrying a defect that arose from an aberrant S-phase (53, 61, 62). Cells in which induced depletion of SETD8 occurs in S-phase proceed normally through mitosis. However, these cells are delayed during the subsequent S-phase, suggesting a role for SETD8 in-between DNA replication cycles that is important for S-phase progression (33, 61). SETD8 is normally degraded during S-phase; however, SETD8 can be stabilized by mutation of the PCNA-interacting protein domain (45, 46, 48, 51, 63). Introduction of this degradation-resistant SETD8 derivative results in aberrant expression of SETD8 during S-phase, which in turn leads to H4K20me1 accumulation in S-phase cells (46, 53). These cells show an S-phase block as well as a G_2 /M arrest, arguing that the timing of methylation is important for proper progression through S-phase. Interestingly, the phenotype resulting

from SETD8 stabilization appears to be dependent on SUV4-20H1 and SUV4-20H2 as the expression of degradation-resistant SETD8 in *Suv4-20h1/Suv4-20h2* double knock-out MEFs reduces the amount of cells arrested in G_2 /M, indicating that the higher methylation states of H4K20 also play a key role in the cell cycle (64). Together, these observations illustrate that correct deposition of H4K20me on the genome is important for faithful progression through S-phase.

The genome needs to be replicated once and only once per cell cycle, and defects in replication can lead to loss of key genomic information or re-replication, which can cause genomic instability. Normally, once an origin fires, mechanisms are in place to ensure that a second firing event, which would lead to re-replication, does not occur (65). H4K20me1 has been implicated in regulating origins as cells expressing degradation-resistant SETD8 show increased H4K20me1 at known origins (49). Moreover, preventing SETD8 degradation in S-phase results in the accumulation of SETD8 at foci that co-localize with BrdU, PCNA, and DNA-polymerase ϵ , markers of active replicating forks, further supporting a direct role for SETD8 at origins (61). In this context, reporter assays show that targeting SETD8 (and subsequently SUV4-20H1 and SUV4-20H2) to an origin can result in local H4K20me and recruitment of ORC and minichromosome maintenance complexes (64).

The identification of the ORC1 BAH domain as a high affinity and specific reader of H4K20me2 provided the first direct link between the DNA replication machinery and H4K20 methylation (23). Structure-guided mutations that abrogated H4K20me2 binding by ORC1 were defective in binding to known origins, and cells expressing these mutants showed a delay in progressing through G_1 -phase (23). In addition to ORC1, another factor present in the ORC complex, named ORCA/LRWD1, binds to H4K20me3 via its WD repeat domain

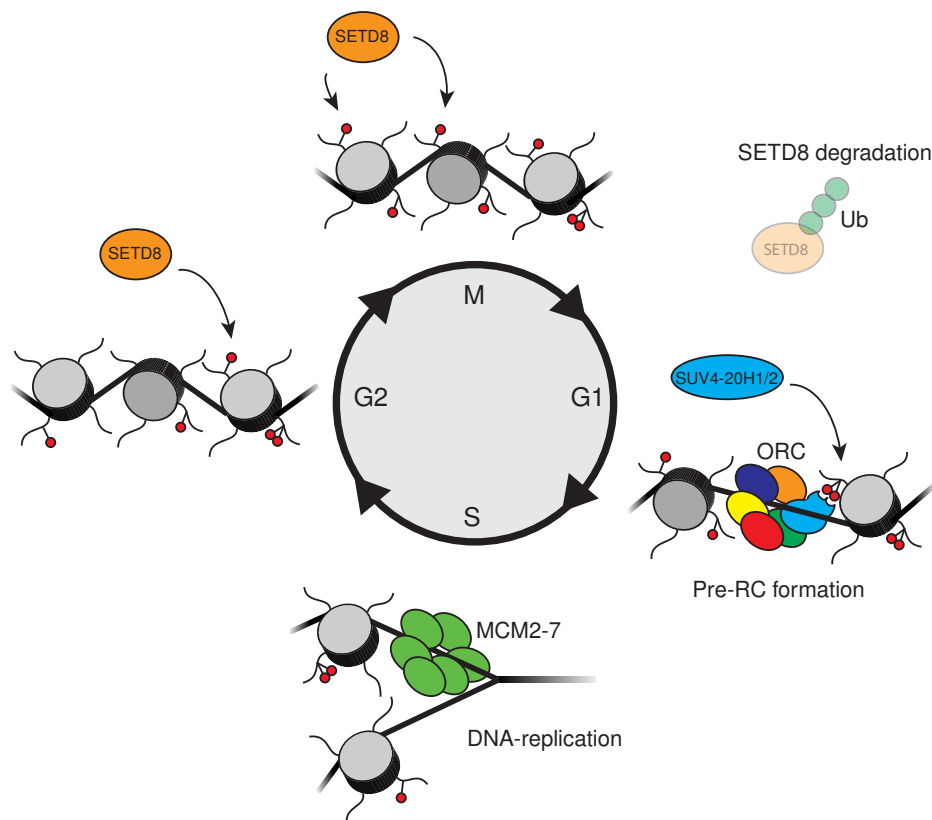


FIG. 3. H4K20me2 recruits the DNA replication licensing machinery through the ORC1-BAH domain. In late G_2 - and M-phase newly incorporated nucleosomes are monomethylated at H4K20 (red lollipop) by SETD8 (orange). Subsequently, SUV4-20H1 and SUV4-20H2 (blue) convert H4K20me1 into H4K20me2 (double-red lollipops) peaking in G_1 -phase. At the same time SETD8 levels drop through ubiquitin-mediated degradation and no new H4K20me1 is formed. In G_1 -phase, the ORC complex (multicolored) is stabilized at ORIs due to direct binding of the ORC1-BAH domain (blue) to H4K20me2. DNA-replication starts from ORIs in S-phase diluting out the epigenetic signature of the ORI.

(64, 66), suggesting that H4K20me2 and H4K20me3 may be involved in stabilizing the ORC complex at ORIs via direct binding to the key ORC component proteins ORC1 and ORCA.

Mutations within several factors that comprise the pre-DNA replication machinery have been identified in individuals affected by Meier-Gorlin syndrome (MGS), an autosomal recessive primordial dwarfism disorder (67–70). Specifically, mutations were identified in genes coding for the pre-DNA replication machinery proteins ORC1, ORC4, ORC6, CDT1, and CDC6 in individuals that have features of MGS, suggesting an important role for DNA replication in the development of primordial dwarfism. The MGS-associated mis-sense mutations in the largest of the ORC proteins, ORC1, fall within the BAH (67–70). Two of these BAH-localized mutations decrease H4K20me2-binding affinity by about 4-fold, suggesting that disruption of the ORC1-H4K20me2 interaction plays an etiologic role in the pathogenesis of MGS (23). Indeed, morpholino-mediated knockdown of drOrc1 in zebrafish resulted in a dwarfism phenotype that was rescued by complementation with human wild-type ORC1 but not by ORC1 H4K20me2-binding mutants. Moreover, double knockdown of drSuv4-

20h1 and drSuv4-20h2 also resulted in the fish displaying a dwarfism phenotype (23); thus, abrogating H4K20me2 binding by ORC1 and depletion of H4K20me2/3 both are required for normal growth in zebrafish, consistent with a role for the ORC1-H4K20me2 interaction in MGS. Further supporting a connection between ORC1 and H4K20 methylation in organismal growth is the observation that *Suv4-20h1/2*^{-/-} mice were born small, and in flies the replacement of all H4 genes by H4K20A delayed development by 24–48 h (13, 34). Together, these results argue that methylation of H4K20, likely me2, the most abundant histone mark, is an important modification that regulates development in higher eukaryotes via its role as a landing dock for ORC1 and potentially other reader domains.

One model integrating our knowledge for how H4K20 methylation may impact the regulation of DNA replication is shown in Fig. 3. By a mechanism yet to be elucidated, SET8 is targeted to ORIs to place H4K20me1 during G_2 /M. Subsequent recruitment of SUV4-20H1/2 during the G_1 -phase leads to generation of H4K20me2/3 at origins. These two marks, H4K20me2 via the ORC1 BAH domain and H4K20me3 via ORCA, are involved in stabilizing the ORC complex at ORIs or

one or both could alternatively play a signaling function at origins, perhaps during the licensing phase. Biologically, abrogating these interactions may lead to inefficient or unstable pre-replication complex formation, which could in turn lead to delayed cell cycle progression and insufficient cellular proliferation during critical developmental phases that necessitate rapid cell division. Thus, mutations in these pathways could lead to organismal dwarfism of a proportional nature like what is observed with MGS. In addition to periods of development, rapid cell proliferation is also a feature of cancer cells, raising the possibility that rendering origin recognition and/or use inefficient via targeting of the ORC1-H4K20me2 interaction may have therapeutic value in the treatment of fast growing tumors. Testing these ideas as well as understanding the precise role of the ORC1-H4K20me2 interaction in regulating replication are important questions moving forward. In addition, as H4K20me2 is a highly abundant species, genome-wide studies during the cell cycle are needed to understand whether this mark is enriched at origins relative to other genomic regions and the relationship of this mark to other chromatin modifications (like H4K16Ac) that play a role in origin selection.

H4K20me Regulates Transcription and Chromatin Compaction—H4K20me has been linked to transcriptional regulation, and H4K20me1 is enriched at the bodies of actively transcribed genes (71) and has been linked to transcriptional activation (72, 73). However, RNAi-mediated reduction of SETD8 can increase the expression levels of specific target genes, and an increase in H4K20me1 levels by PHF8 knock-down reduces the mRNA levels of PHF8-bound genes (40, 41, 45). Additionally, tethering SETD8 to endogenous loci as well as to reporter genes results in mild repression of transcription (74). Finally, SETD8 depletion in flies is associated with position-effect variegation, a typical heterochromatin defect (75). Together, these data implicate H4K20me1 in transcriptional regulation, with the consequence of repression or activation likely dictated by specific reader proteins that couple the mark to downstream outcomes.

With respect to repression, SETD8-mediated H4K20me1 may regulate local compaction of the chromatin fiber. The depletion of SETD8 reduces chromatin condensation in interphase cells, suggesting that the normal function of H4K20me1 is to promote a condensed state, which would be consistent with gene silencing (33, 53, 61). H4K20me1 is directly bound by the 3×MBT domain of chromatin compaction protein L3MBTL1 (76, 77), and L3MBTL1, in an H4K20me1-dependent fashion, condenses nucleosomal arrays to create a dense and locked chromatin structure that is repressive for transcription (78).

Role of Mass Spectrometry in Characterizing Methylation at H4K20—An essential aspect that has greatly facilitated the characterization of H4K20 methyl biology has come from mass spectrometry approaches. As described above, both bottom-up and top-down approaches in combination with

quantitative strategies have provided insight into the kinetics of H4K20 methylation through the cell cycle, during development, and in different disease states. In addition, mass spectrometry approaches have been key in developing our understanding of dynamic cross-talk between H4K20 methylation and other histone modifications.

For example, Imhof and co-workers (79) utilized mass spectrometry to characterize an elegant *in vitro* chromatin assembly system. In this study, mass spectrometry was used to determine the order of H4 PTMs during deposition of histones on DNA templates in the context of *Drosophila* extracts. Mono-methylation of H4K20 was found to follow acetylation events and to be required for subsequent de-acetylation, implicating H4K20me1 in chromatin assembly via marking the fully assembled nucleosome after histone deposition (79). An unbiased middle-down proteomics was also used to correlate the status of H4K20 methylation relative to the differential potency of cells (80). Specifically, H4K20 tri-methylation is enriched in embryonic stem cells and in induced pluripotent stem cells relative to more differentiated cells. In contrast, H4K20 mono- and di-methylation are higher in differentiated cells compared with embryonic stem cells and induced pluripotent stem cell samples. Using a top-down approach, Kelleher and co-workers (81) provided a comprehensive and quantitative analysis of the modified forms of histone H4. This study determined the relative abundance of 42 uniquely modified histone H4 species. One observation arising from this analysis provided further evidence that dimethylation of H4K20 is the most abundant modification on H4.

As nucleosomes contain two copies of each core histone, a longstanding question in the field is whether modifications are found symmetrically or asymmetrically on histones in the context of nucleosomes. Moreover, once armed with this information, do these principles hold for all histone PTMs or are there specific PTMs that are symmetric, whereas others more commonly associated asymmetrically with nucleosomes? Furthermore, if this is the case, are there functional consequences to these differences? The only approach that can begin to address these types of questions is one taking advantage of mass spectrometry. In an elegant study, Reinberg and co-workers (82) developed a strategy involving quantitative liquid chromatography and tandem mass spectrometry (LC-MS/MS) of modification state-specific antibody immunoprecipitations from micrococcal nuclease-digested extracts. In this way, if the mark of interest (the one recognized by the antibody being used for the immunoprecipitation) is present on 100% of the peptides spanning the modification, then the modification is present symmetrically on nucleosomes. However, if only 50% of peptides contain the modification of interest, then the modification is asymmetrically associated with nucleosomes. Enrichment between 50 and 100% indicates a mixed population (symmetric and asymmetric nucleosomes). Using a thoroughly vetted H4K20me1 antibody (which is an essential requirement for the analysis), roughly

50% of H4K20me1-containing nucleosomes are symmetric and 50% asymmetric (82). A future question of interest will be to test whether the different populations of H4K20me1 nucleosomes are linked to alternative pathways and functional outcomes as well as the mechanisms that result in one fate *versus* the other.

Concluding Remarks—H4K20me is essential for development, and alterations in H4K20me are associated with a variety of diseases ranging from cancer to developmental disorders like MGS. Here, we have only highlighted some of the many functions associated with the different methyl states of H4K20. It is important to note that the diversity of functions associated with a methylation event is largely dictated by the reader domain binding event, which senses and transduces the modification within a spatial and temporal context. For example, HK420me2 can be linked to DNA damage *versus* DNA replication based on whether it is bound by 53BP1 (via its tandem tudor domain) or ORC1 (via its BAH domain). Understanding how different readers are differentially targeted represents a new challenge in the field that when addressed will help us further elucidate the mechanisms by which lysine methylation regulates biology. Given that the methylation of a single residue, H4K20, can function in roles ranging from DNA damage, DNA replication, mitosis, and transcription, there is great potential for the broad signaling network defined by lysine methylation to greatly expand the functionality of the proteome, and as such, we anticipate exciting new biology resulting from the study of protein lysine methylation as well as the identification of new targets for therapeutics to treat human disease.

* This work was supported in part by National Institutes of Health Grant R01 GM079641 (to O.G.). O.G. is a co-founder of EpiCypher, Inc. The content is solely the responsibility of the authors and does not necessarily represent the official views of the National Institutes of Health.

‡ To whom correspondence should be addressed. E-mail: ogozani@stanford.edu.

REFERENCES

- International Human Genome Sequencing Consortium (2004) Finishing the euchromatic sequence of the human genome. *Nature* **431**, 931–945
- Pan, Q., Shai, O., Lee, L. J., Frey, B. J., and Blencowe, B. J. (2008) Deep surveying of alternative splicing complexity in the human transcriptome by high-throughput sequencing. *Nat. Genet.* **40**, 1413–1415
- Minguez, P., Parca, L., Diella, F., Mende, D. R., Kumar, R., Helmer-Citterich, M., Gavin, A. C., van Noort, V., and Bork, P. (2012) Deciphering a global network of functionally associated post-translational modifications. *Mol. Syst. Biol.* **8**, 599
- Luger, K., Mäder, A. W., Richmond, R. K., Sargent, D. F., and Richmond, T. J. (1997) Crystal structure of the nucleosome core particle at 2.8 Å resolution. *Nature* **389**, 251–260
- Kouzarides, T. (2007) Chromatin modifications and their function. *Cell* **128**, 693–705
- Black, J. C., Van Rechem, C., and Whetstone, J. R. (2012) Histone lysine methylation dynamics: establishment, regulation, and biological impact. *Mol. Cell* **48**, 491–507
- Suganuma, T., and Workman, J. L. (2011) Signals and combinatorial functions of histone modifications. *Annu. Rev. Biochem.* **80**, 473–499
- Taverna, S. D., Li, H., Ruthenburg, A. J., Allis, C. D., and Patel, D. J. (2007) How chromatin-binding modules interpret histone modifications: lessons from professional pocket pickers. *Nat. Struct. Mol. Biol.* **14**, 1025–1040
- Turner, B. M. (2005) Reading signals on the nucleosome with a new nomenclature for modified histones. *Nat. Struct. Mol. Biol.* **12**, 110–112
- Moore, K. E., and Gozani, O. (2014) An unexpected journey: lysine methylation across the proteome. *Biochim. Biophys. Acta* **1839**, 1395–1403
- Beck, D. B., Oda, H., Shen, S. S., and Reinberg, D. (2012) PR-Set7 and H4K20me1: at the crossroads of genome integrity, cell cycle, chromosome condensation, and transcription. *Genes Dev.* **26**, 325–337
- Jørgensen, S., Schotta, G., and Sørensen, C. S. (2013) Histone H4 lysine 20 methylation: key player in epigenetic regulation of genomic integrity. *Nucleic Acids Res.* **41**, 2797–2806
- Schotta, G., Sengupta, R., Kubicek, S., Malin, S., Kauer, M., Callén, E., Celeste, A., Pagani, M., Opravil, S., De La Rosa-Velazquez, I. A., Espejo, A., Bedford, M. T., Nussenzweig, A., Busslinger, M., and Jenuwein, T. (2008) A chromatin-wide transition to H4K20 monomethylation impairs genome integrity and programmed DNA rearrangements in the mouse. *Genes Dev.* **22**, 2048–2061
- Leroy, G., Dimaggio, P. A., Chan, E. Y., Zee, B. M., Blanco, M. A., Bryant, B., Flaniken, I. Z., Liu, S., Kang, Y., Trojer, P., and Garcia, B. A. (2013) A quantitative atlas of histone modification signatures from human cancer cells. *Epigenetics Chromatin* **6**, 20
- Pesavento, J. J., Yang, H., Kelleher, N. L., and Mizzen, C. A. (2008) Certain and progressive methylation of histone H4 at lysine 20 during the cell cycle. *Mol. Cell. Biol.* **28**, 468–486
- Evertts, A. G., Manning, A. L., Wang, X., Dyson, N. J., Garcia, B. A., and Collier, H. A. (2013) H4K20 methylation regulates quiescence and chromatin compaction. *Mol. Biol. Cell* **24**, 3025–3037
- Nishioka, K., Rice, J. C., Sarma, K., Erdjument-Bromage, H., Werner, J., Wang, Y., Chuiikov, S., Valenzuela, P., Tempst, P., Steward, R., Lis, J. T., Allis, C. D., and Reinberg, D. (2002) PR-Set7 is a nucleosome-specific methyltransferase that modifies lysine 20 of histone H4 and is associated with silent chromatin. *Mol. Cell* **9**, 1201–1213
- Fang, J., Feng, Q., Ketel, C. S., Wang, H., Cao, R., Xia, L., Erdjument-Bromage, H., Tempst, P., Simon, J. A., and Zhang, Y. (2002) Purification and functional characterization of SET8, a nucleosomal histone H4-lysine 20-specific methyltransferase. *Curr. Biol.* **12**, 1086–1099
- Pannetier, M., Julien, E., Schotta, G., Tardat, M., Sardet, C., Jenuwein, T., and Feil, R. (2008) PR-SET7 and SUV4-20H regulate H4 lysine-20 methylation at imprinting control regions in the mouse. *EMBO Rep.* **9**, 998–1005
- Schotta, G., Lachner, M., Sarma, K., Ebert, A., Sengupta, R., Reuter, G., Reinberg, D., and Jenuwein, T. (2004) A silencing pathway to induce H3-K9 and H4-K20 trimethylation at constitutive heterochromatin. *Genes Dev.* **18**, 1251–1262
- Couture, J. F., Collazo, E., Brunzelle, J. S., and Trievel, R. C. (2005) Structural and functional analysis of SET8, a histone H4 Lys-20 methyltransferase. *Genes Dev.* **19**, 1455–1465
- Xiao, B., Jing, C., Kelly, G., Walker, P. A., Muskett, F. W., Frenkiel, T. A., Martin, S. R., Sarma, K., Reinberg, D., Gamblin, S. J., and Wilson, J. R. (2005) Specificity and mechanism of the histone methyltransferase Pr-Set7. *Genes Dev.* **19**, 1444–1454
- Kuo, A. J., Song, J., Cheung, P., Ishibe-Murakami, S., Yamazoe, S., Chen, J. K., Patel, D. J., and Gozani, O. (2012) The BAH domain of ORC1 links H4K20me2 to DNA replication licensing and Meier-Gorlin syndrome. *Nature* **484**, 115–119
- Pei, H., Zhang L., Luo, K., Qin, Y., Chesi, M., Fei, F., Bergsagel, P. L., Wang, L., You, Z., Lou, Z. (2011) MMSET regulates histone H4K20 methylation and 53BP1 accumulation at DNA damage sites. *Nature* **470**, 124–128
- Li, Y., Trojer, P., Xu, C. F., Cheung, P., Kuo, A., Drury, W. J., 3rd, Qiao, Q., Neubert, T. A., Xu, R. M., Gozani, O., and Reinberg, D. (2009) The target of the NSD family of histone lysine methyltransferases depends on the nature of the substrate. *J. Biol. Chem.* **284**, 34283–34295
- Kuo, A. J., Cheung, P., Chen, K., Zee, B. M., Kioi, M., Lauring, J., Xi, Y., Park, B. H., Shi, X., Garcia, B. A., Li, W., and Gozani, O. (2011) NSD2 links dimethylation of histone H3 at lysine 36 to oncogenic programming. *Mol. Cell* **44**, 609–620
- Van Aller, G. S., Reynoird, N., Barbash, O., Huddleston, M., Liu, S., Zmoos, A. F., McDevitt, P., Sinnamon, R., Le, B., Mas, G., Annan, R., Sage, J., Garcia, B. A., Tummino, P. J., Gozani, O., and Kruger, R. G. (2012) Smdy3 regulates cancer cell phenotypes and catalyzes histone H4 lysine

- 5 methylation. *Epigenetics* **7**, 340–343
28. Kudithipudi, S., Kusevic, D., Weirich, S., and Jeltsch, A. (2014) Specificity analysis of protein lysine methyltransferases using SPOT peptide arrays. *J. Vis. Exp.* **93**, e52203
 29. Kudithipudi, S., Lungu, C., Rathert, P., Happel, N., and Jeltsch, A. (2014) Substrate specificity analysis and novel substrates of the protein lysine methyltransferase NSD1. *Chem. Biol.* **21**, 226–237
 30. Yang, H., Pesavento, J. J., Starnes, T. W., Cryderman, D. E., Wallrath, L. L., Kelleher, N. L., and Mizzen, C. A. (2008) Preferential dimethylation of histone H4 lysine 20 by Suv4-20. *J. Biol. Chem.* **283**, 12085–12092
 31. Southall, S. M., Cronin, N. B., and Wilson, J. R. (2014) A novel route to product specificity in the Suv4-20 family of histone H4K20 methyltransferases. *Nucleic Acids Res.* **42**, 661–671
 32. Wu, H., Siarheyeva, A., Zeng, H., Lam, R., Dong, A., Wu, X. H., Li, Y., Schapira, M., Vedadi, M., and Min, J. (2013) Crystal structures of the human histone H4K20 methyltransferases SUV420H1 and SUV420H2. *FEBS Lett.* **587**, 3859–3868
 33. Oda, H., Okamoto, I., Murphy, N., Chu, J., Price, S. M., Shen, M. M., Torres-Padilla, M. E., Heard, E., and Reinberg, D. (2009) Monomethylation of histone H4-lysine 20 is involved in chromosome structure and stability and is essential for mouse development. *Mol. Cell. Biol.* **29**, 2278–22795
 34. McKay, D. J., Klusza, S., Penke, T. J., Meers, M. P., Curry, K. P., McDaniel, S. L., Malek P. Y., Cooper, S. W., Tatomer, D. C., Lieb, J. D., Strahl, B. D., Duronio, R. J., and Matera, A. G. (2015) Interrogating the function of metazoan histones using engineered gene clusters. *Dev. Cell* **32**, 373–386
 35. Shi, X., Kachirskaja, I., Yamaguchi, H., West, L. E., Wen, H., Wang, E. W., Dutta, S., Appella, E., and Gozani, O. (2007) Modulation of p53 function by SET8-mediated methylation at lysine 382. *Mol. Cell* **27**, 636–646
 36. Dhami, G. K., Liu, H., Galka, M., Voss, C., Wei, R., Muranko, K., Kaneko, T., Cregan, S. P., Li, L., and Li, S. S. (2013) Dynamic methylation of Numb by Set8 regulates its binding to p53 and apoptosis. *Mol. Cell* **50**, 565–576
 37. Takawa, M., Cho, H. S., Hayami, S., Toyokawa, G., Kogure, M., Yamane, Y., Iwai, Y., Maejima, K., Ueda, K., Masuda, A., Dohmae, N., Field, H. I., Tsunoda, T., Kobayashi, T., Akasu, T., Sugiyama, M., Ohnuma, S., Atomi, Y., Ponder, B. A., Nakamura, Y., and Hamamoto, R. (2012) Histone lysine methyltransferase SETD8 promotes carcinogenesis by deregulating PCNA expression. *Cancer Res.* **72**, 3217–3227
 38. Mosammamaparast, N., and Shi, Y. (2010) Reversal of histone methylation: biochemical and molecular mechanisms of histone demethylases. *Annu. Rev. Biochem.* **79**, 155–179
 39. Feng, W., Yonezawa, M., Ye, J., Jenuwein, T., and Grummt, I. (2010) PHF8 activates transcription of rRNA genes through H3K4me3 binding and H3K9me1/2 demethylation. *Nat. Struct. Mol. Biol.* **17**, 445–450
 40. Qi, H. H., Sarkissian, M., Hu, G. Q., Wang, Z., Bhattacharjee, A., Gordon, D. B., Gonzales, M., Lan, F., Ongusaha, P. P., Huarte, M., Yaghi, N. K., Lim, H., Garcia, B. A., Brizuela, L., Zhao, K., Roberts, T. M., and Shi, Y. (2010) Histone H4K20/H3K9 demethylase PHF8 regulates zebrafish brain and craniofacial development. *Nature* **466**, 503–507
 41. Liu, W., Tanasa, B., Tyurina, O. V., Zhou, T. Y., Gassmann, R., Liu, W. T., Ohgi, K. A., Benner, C., Garcia-Bassets, I., Aggarwal, A. K., Desai, A., Dorrestein, P. C., Glass, C. K., and Rosenfeld, M. G. (2010) PHF8 mediates histone H4 lysine 20 demethylation events involved in cell cycle progression. *Nature* **466**, 508–512
 42. Lachner, M., O'Carroll, D., Rea, S., Mechtler, K., and Jenuwein, T. (2001) Methylation of histone H3 lysine 9 creates a binding site for HP1 proteins. *Nature* **410**, 116–120
 43. Bannister, A. J., Zegerman, P., Partridge, J. F., Miska, E. A., Thomas, J. O., Allshire, R. C., and Kouzarides, T. (2001) Selective recognition of methylated lysine 9 on histone H3 by the HP1 chromo domain. *Nature* **410**, 120–124
 44. Hahn, M., Dambacher, S., Dulev, S., Kuznetsova, A. Y., Eck, S., Worz, S., Sadic, D., Schulte, M., Mallm, J. P., Maiser, A., Debs, P., von Melchner, H., Leonhardt, H., Schermelleh, L., Rohr, K., Rippe, K., Storchova, Z., and Schotta, G. (2013) Suv4-20h2 mediates chromatin compaction and is important for cohesin recruitment to heterochromatin. *Genes Dev.* **27**, 859–872
 45. Abbas, T., Shibata, E., Park, J., Jha, S., Karnani, N., and Dutta, A. (2010) CRL4(Cdt2) regulates cell proliferation and histone gene expression by targeting PR-Set7/Set8 for degradation. *Mol. Cell* **40**, 9–21
 46. Centore, R. C., Havens, C. G., Manning, A. L., Li, J. M., Flynn, R. L., Tse, A., Jin, J., Dyson, N. J., Walter, J. C., and Zou, L. (2010) CRL4(Cdt2)-mediated destruction of the histone methyltransferase Set8 prevents premature chromatin compaction in S phase. *Mol. Cell* **40**, 22–33
 47. Jørgensen, S., Eskildsen, M., Fugger, K., Hansen, L., Larsen, M. S., Kousholt, A. N., Syljuåsen, R. G., Trelle, M. B., Jensen, O. N., Helin, K., and Sørensen, C. S. (2011) SET8 is degraded via PCNA-coupled CRL4(CDT2) ubiquitylation in S phase and after UV irradiation. *J. Cell Biol.* **192**, 43–54
 48. Oda, H., Hübner, M. R., Beck, D. B., Vermeulen, M., Hurwitz, J., Spector, D. L., and Reinberg, D. (2010) Regulation of the histone H4 monomethylase PR-Set7 by CRL4(Cdt2)-mediated PCNA-dependent degradation during DNA damage. *Mol. Cell* **40**, 364–376
 49. Tardat, M., Brustel, J., Kirsh, O., Lefebvre, C., Callanan, M., Sardet, C., and Julien, E. (2010) The histone H4 Lys 20 methyltransferase PR-Set7 regulates replication origins in mammalian cells. *Nat. Cell Biol.* **12**, 1086–1093
 50. Wu, S., Wang, W., Kong, X., Congdon, L. M., Yokomori, K., Kirschner, M. W., and Rice, J. C. (2010) Dynamic regulation of the PR-Set7 histone methyltransferase is required for normal cell cycle progression. *Genes Dev.* **24**, 2531–2542
 51. Havens, C. G., and Walter, J. C. (2011) Mechanism of CRL4(Cdt2), a PCNA-dependent E3 ubiquitin ligase. *Genes Dev.* **25**, 1568–1582
 52. Sanders, S. L., Portoso, M., Mata, J., Bähler, J., Allshire, R. C., and Kouzarides, T. (2004) Methylation of histone H4 lysine 20 controls recruitment of Crb2 to sites of DNA damage. *Cell* **119**, 603–614
 53. Houston, S. I., McManus, K. J., Adams, M. M., Sims, J. K., Carpenter, P. B., Hendzel, M. J., and Rice, J. C. (2008) Catalytic function of the PR-Set7 histone H4 lysine 20 monomethyltransferase is essential for mitotic entry and genomic stability. *J. Biol. Chem.* **283**, 19478–19488
 54. Musselman, C. A., Lalonde, M. E., Côté, J., and Kutateladze, T. G. (2012) Perceiving the epigenetic landscape through histone readers. *Nat. Struct. Mol. Biol.* **19**, 1218–1227
 55. Polo, S. E., and Jackson, S. P. (2011) Dynamics of DNA damage response proteins at DNA breaks: a focus on protein modifications. *Genes Dev.* **25**, 409–433
 56. Botuyan, M. V., Lee, J., Ward, I. M., Kim, J. E., Thompson, J. R., Chen, J., and Mer, G. (2006) Structural basis for the methylation state-specific recognition of histone H4-K20 by 53BP1 and Crb2 in DNA repair. *Cell* **127**, 1361–1373
 57. Greason, N. T., Bengupta, R., Arida, A. R., Jenuwein, T., and Sanders, S. L. (2008) Di-methyl H4 lysine 20 targets the checkpoint protein Crb2 to sites of DNA damage. *J. Biol. Chem.* **283**, 33168–33174
 58. Tuzon, C. T., Spektor, T., Kong, X., Congdon, L. M., Wu, S., Schotta, G., Yokomori, K., and Rice, J. C. (2014) Concerted activities of distinct H4K20 methyltransferases at DNA double-strand breaks regulate 53BP1 nucleation and NHEJ-directed repair. *Cell Rep.* **8**, 430–438
 59. Arias, E. E., and Walter, J. C. (2007) Strength in numbers: preventing rereplication via multiple mechanisms in eukaryotic cells. *Genes Dev.* **21**, 497–518
 60. Méchali, M., Yoshida, K., Coulombe, P., and Pasero, P. (2013) Genetic and epigenetic determinants of DNA replication origins, position and activation. *Curr. Opin. Genet. Dev.* **23**, 124–131
 61. Tardat, M., Murr, R., Herceg, Z., Sardet, C., and Julien, E. (2007) PR-Set7-dependent lysine methylation ensures genome replication and stability through S phase. *J. Cell Biol.* **179**, 1413–1426
 62. Jørgensen, S., Elvers, I., Trelle, M. B., Menzel, T., Eskildsen, M., Jensen, O. N., Helleday, T., Helin, K., and Sørensen, C. S. (2007) The histone methyltransferase SET8 is required for S-phase progression. *J. Cell Biol.* **179**, 1337–1345
 63. Lee, J., and Zhou, P. (2010) SETting the clock for histone H4 monomethylation. *Mol. Cell* **40**, 345–346
 64. Beck, D. B., Burton, A., Oda, H., Ziegler-Birling, C., Torres-Padilla, M. E., and Reinberg, D. (2012) The role of PR-Set7 in replication licensing depends on Suv4-20h. *Genes Dev.* **26**, 2580–2589
 65. Siddiqui, K., On, K. F., and Diffley, J. F. (2013) Regulating DNA replication in eukarya. *Cold Spring Harb. Perspect. Biol.* **5**, a012930
 66. Shen, Z., Sathyan, K. M., Geng, Y., Zheng, R., Chakraborty, A., Freeman, B., Wang, F., Prasanth, K. V., and Prasanth, S. G. (2010) A WD-repeat protein stabilizes ORC binding to chromatin. *Mol. Cell* **40**, 99–111
 67. Bicknell, L. S., Bongers, E. M., Leitch, A., Brown, S., Schoots, J., Harley,

- M. E., Aftimos, S., Al-Aama, J. Y., Bober, M., Brown, P. A., van Bokhoven, H., Dean, J., Edrees, A. Y., Feingold, M., Fryer, A., Hoefsloot, L. H., Kau, N., Knoers, N. V., Mackenzie, J., Opitz, J. M., Sarda, P., Ross, A., Temple, I. K., Toutain, A., Wise, C. A., Wright, M., and Jackson, A. P. (2011) Mutations in the pre-replication complex cause Meier-Gorlin syndrome. *Nat. Genet.* **43**, 356–359
68. Bicknell, L. S., Walker, S., Klingseisen, A., Stiff, T., Leitch, A., Kerzendorfer, C., Martin, C. A., Yeyati, P., Al Sanna, N., Bober, M., Johnson, D., Wise, C., Jackson, A. P., O'Driscoll, M., and Jeggo, P. A. (2011) Mutations in ORC1, encoding the largest subunit of the origin recognition complex, cause microcephalic primordial dwarfism resembling Meier-Gorlin syndrome. *Nat. Genet.* **43**, 350–355
69. Klingseisen, A., and Jackson, A. P. (2011) Mechanisms and pathways of growth failure in primordial dwarfism. *Genes Dev.* **25**, 2011–2024
70. Guernsey, D. L., Matsuoka, M., Jiang, H., Evans, S., Macgillivray, C., Nightingale, M., Perry, S., Ferguson, M., LeBlanc, M., Paquette, J., Patry, L., Rideout, A. L., Thomas, A., Orr, A., McMaster, C. R., Michaud, J. L., Deal, C., Langlois, S., Superneau, D. W., Parkash, S., Ludman, M., Skidmore, D. L., and Samuels, M. E. (2011) Mutations in origin recognition complex gene ORC4 cause Meier-Gorlin syndrome. *Nat. Genet.* **43**, 360–364
71. Barski, A., Cuddapah, S., Cui, K., Roh, T. Y., Schones, D. E., Wang, Z., Wei, G., Chepelev, I., and Zhao, K. (2007) High-resolution profiling of histone methylations in the human genome. *Cell* **129**, 823–837
72. Li, Y., Sun, L., Zhang, Y., D., Wang, Wang, F., Liang, J., Gui, B., and Shang, Y. (2011) The histone modifications governing TFF1 transcription mediated by estrogen receptor. *J. Biol. Chem.* **286**, 13925–13936
73. Li, Z., Nie, F., Wang, S., and Li, L. (2011) Histone H4 Lys 20 monomethylation by histone methylase SET8 mediates Wnt target gene activation. *Proc. Natl. Acad. Sci. U.S.A.* **108**, 3116–3123
74. Congdon, L. M., Houston, S. I., Veerappan, C. S., Spektor, T. M., and Rice, J. C. (2010) PR-Set7-mediated monomethylation of histone H4 lysine 20 at specific genomic regions induces transcriptional repression. *J. Cell. Biochem.* **110**, 609–619
75. Karachentsev, D., Sarma, K., Reinberg, D., and Steward, R. (2005) PR-Set7-dependent methylation of histone H4 Lys 20 functions in repression of gene expression and is essential for mitosis. *Genes Dev.* **19**, 431–435
76. Kim, J., Daniel, J., Espejo, A., Lake, A., Krishna, M., Xia, L., Zhang, Y., and Bedford, M. T. (2006) Tudor, MBT and chromo domains gauge the degree of lysine methylation. *EMBO Rep.* **7**, 397–403
77. Min, J., Allali-Hassani, A., Nady, N., Qi, C., Ouyang, H., Liu, Y., MacKenzie, F., Vedadi, M., and Arrowsmith, C. H. (2007) L3MBTL1 recognition of mono- and dimethylated histones. *Nat. Struct. Mol. Biol.* **14**, 1229–1230
78. Trojer, P., Li, G., Sims, R. J., 3rd, Vaquero, A., Kalakonda, N., Boccuni, P., Lee, D., Erdjument-Bromage, H., Tempst, P., Nimer, S. D., Wang, Y. H., and Reinberg, D. (2007) L3MBTL1, a histone-methylation-dependent chromatin lock. *Cell* **129**, 915–928
79. Scharf, A. N., Meier, K., Seitz, V., Kremmer, E., Brehm, A., and Imhof, A. (2009) Monomethylation of lysine 20 on histone H4 facilitates chromatin maturation. *Mol. Cell. Biol.* **29**, 57–67
80. Benevento, M., Tonge, P. D., Puri, M. C., Nagy, A., Heck, A. J., and Munoz, J. (2015) Fluctuations in histone H4 isoforms during cellular reprogramming monitored by middle-down proteomics. *Proteomics* **15**, 3219–3231
81. Pesavento, J. J., Bullock, C. R., LeDuc, R. D., Mizzen, C. A., and Kelleher, N. L. (2008) Combinatorial modification of human histone H4 quantitated by two-dimensional liquid chromatography coupled with top down mass spectrometry. *J. Biol. Chem.* **283**, 14927–14937
82. Voigt, P., LeRoy, G., Drury, W. J., 3rd, Zee, B. M., Son, J., Beck, D. B., Young, N. L., Garcia, B. A., and Reinberg, D. (2012) Asymmetrically modified nucleosomes. *Cell* **151**, 181–193
83. Guo, Y., Nady, N., Qi, C., Allali-Hassani, A., Zhu, H., Pan, P., Adams-Cioaba, M. A., Amaya, M. F., Dong, A., Vedadi, M., Schapira, M., Read, R. J., Arrowsmith, C. H., and Min, J. (2009) Methylation-state-specific recognition of histones by the MBT repeat protein L3MBTL2. *Nucleic Acids Res.* **37**, 2204–2210
84. Kim, D., Blus, B. J., Chandra, V., Huang, P., Rastinejad, F., and Khorasanizadeh, S. (2010) Corecognition of DNA and a methylated histone tail by the MSL3 chromodomain. *Nat. Struct. Mol. Biol.* **17**, 1027–1029
85. Wang, Y., Reddy, B., Thompson, J., Wang, H., Noma, K., Yates, J. R., 3rd, and Jia, S. (2009) Regulation of Set9-mediated H4K20 methylation by a PWWP domain protein. *Mol. Cell* **33**, 428–437
86. Qiu, Y., Zhang, W., Zhao, C., Wang, Y., Wang, W., Zhang, J., Zhang, Z., Li, G., Shi, Y., Tu, X., and Wu, J. (2012) Solution structure of the Pdp1 PWWP domain reveals its unique binding sites for methylated H4K20 and DNA. *Biochem. J.* **442**, 527–538
87. Lee, J., Thompson, J. R., Botuyan, M. V., and Mer, G. (2008) Distinct binding modes specify the recognition of methylated histones H3K4 and H4K20 by JMJD2A-tudor. *Nat. Struct. Mol. Biol.* **15**, 109–111
88. Mallette, F. A., Mattioli, F., Cui, G., Young, L. C., Hendzel, M. J., Mer, G., Sixma, T. K., and Richard, S. (2012) RNF8- and RNF168-dependent degradation of KDM4A/JMJD2A triggers 53BP1 recruitment to DNA damage sites. *EMBO J.* **31**, 1865–1878
89. Hirano, Y., Hizume, K., Kimura, H., Takeyasu, K., Haraguchi, T., and Hiraoaka, Y. (2012) Lamin B receptor recognizes specific modifications of histone H4 in heterochromatin formation. *J. Biol. Chem.* **287**, 42654–42663
90. Chan, K. M., and Zhang, Z. (2012) Leucine-rich repeat and WD repeat-containing protein 1 is recruited to pericentric heterochromatin by trimethylated lysine 9 of histone H3 and maintains heterochromatin silencing. *J. Biol. Chem.* **287**, 15024–15033