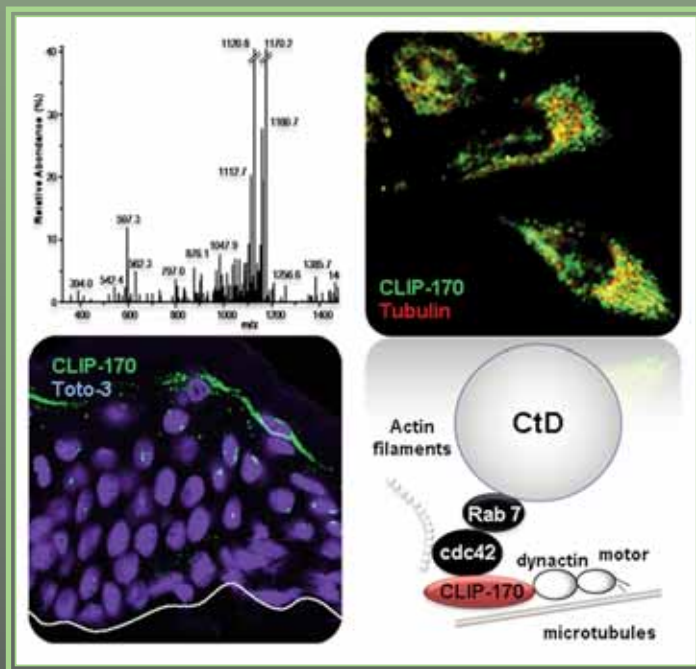


Molecular & Cellular Proteomics

Volume 7, Number 11, November 2008

www.mcponline.org



Proteomics characterization by high throughput mass spectrometry of epidermal lamellar bodies

In this issue

Clinical Proteomics Guidelines
20 S Proteasome Phosphoproteome
Regulation of Transcription
Sumoylation and the Proteasome
PO₄- α -Synuclein Interactions
Directed Proteomics Analysis
Lamellar Bodies of Epidermis
Zebrafish Phosphoproteomics
Phospho-profile of BK_{Ca} Channels
VRK1 Activity Regulated by Ran
Label-free MMP-9 Degradomics
Xenopus Oocyte O-GlcNAcome
Soluble Membrane Protein in NLP
Proteome of Human Erythrocytes
MRM Visualization with MRMer
Fluorescent Two-hybrid Assay
HUPO2008 Amsterdam Report

Get Jazzed...



to Meet in New Orleans!

Now Accepting Abstract Submissions!
Abstract Submission Deadline:
November 5, 2008

Travel Award Application Deadline:
November 12, 2008*

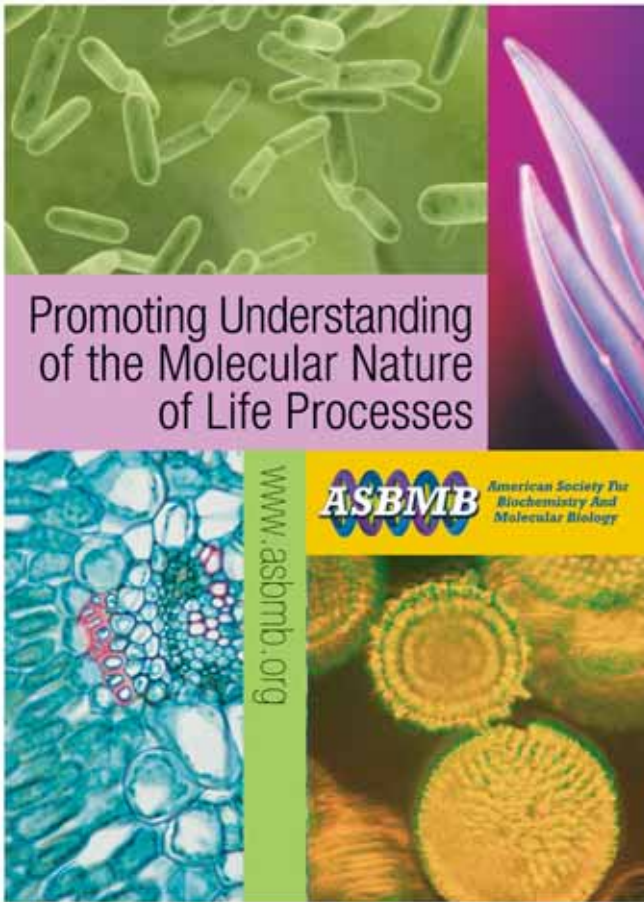
(*abstract must be submitted by Nov. 5, 2008)

Early Registration Deadline:
February 9, 2009

April 18–22, 2009

www.asbmb.org/annualmeeting.aspx


American Society for Biochemistry and Molecular Biology



**Department of Chemistry and Molecular Biology
North Dakota State University
Faculty Position in Biochemistry/Molecular Biology**

The Department of Chemistry and Molecular Biology (www.ndsu.edu/chemistry) is seeking outstanding applicants for a tenure-track faculty (rank open) in broad aspects of biochemistry/molecular biology. Applicants with research interests in proteomics, metabolomics, glycobiology, and lipid biochemistry with cancer as a disease focus will be given priority.

The department has excellent modern facilities with an annual research expenditure exceeding \$3 million. Since 2001, faculty from the department have spearheaded a nationally competitive Center of Biomedical Research Excellence (www.ndsu.edu/cpr). The center has recently secured five additional years of NIH support and its scientific goals are focused on human health disorders, including cancer and asthma. The center has state-of-the-art Biology and Synthetic Chemistry Core Facilities. The candidate is expected to maintain a vigorous NIH supported research program and participate in the educational mission of the department by teaching graduate and undergraduate students. The department offers M.S. and Ph.D. degrees in both Chemistry and Biochemistry/Molecular Biology.

The candidate should have a Ph.D. or M.D./Ph.D. degree in chemistry, biochemistry, molecular biology, or a related field. A demonstrated potential to establish a nationally competitive research program is required. Applicants must be able to communicate effectively in spoken and written English. This position will have a competitive start-up package and salary will be commensurate with experience. Review of applications will begin November 15, 2008 and will continue until filled. Qualified applicants should apply online at jobs.ndsu.edu: you must include a cover letter, statement of research interests, statement of teaching philosophy, curriculum vitae. Arrange to have three letters of reference sent to:

Mukund Sibi, Ph.D., Department of Chemistry and Molecular Biology, North Dakota State University — Dept 2735, 1231 Albrecht Boulevard, PO Box 6050, Fargo ND 58108-6050

Email inquiries may be sent to rose.nichols@ndsu.edu
North Dakota State University is an equal opportunity institution.

Statement of Ownership, Management, and Circulation
UNITED STATES POSTAL SERVICE® (All Periodicals Publications Except Requester Publications)

1. Publication Title Molecular & Cellular Proteomics		2. Publication Number 1 5 3 3 - 9 4 7 6		3. Filing Date September 22, 2008	
4. Issue Frequency Monthly		5. Number of Issues Published Annually 12		6. Annual Subscription Price \$500.00	
7. Complete Mailing Address of Known Office of Publication (Not printer) (Street, city, county, state, and ZIP+4®) 9650 Rockville Pike Bethesda, MD 20814-3996				Contact Person Red Haber Telephone (include area code) 301-634-7140	
8. Complete Mailing Address of Headquarters or General Business Office of Publisher (Not printer) 9650 Rockville Pike Bethesda, MD 20814-3996					
9. Full Names and Complete Mailing Addresses of Publisher, Editor, and Managing Editor (Do not leave blank)					
Publisher (Name and complete mailing address) Barbara A. Gordon American Society for Biochemistry and Molecular Biology, Inc. 9650 Rockville Pike, Bethesda, MD 20814-3996					
Editor (Name and complete mailing address) Ralph A. Bradshaw American Society for Biochemistry and Molecular Biology, Inc. 9650 Rockville Pike, Bethesda, MD 20814-3996					
Managing Editor (Name and complete mailing address) Barbara A. Gordon American Society for Biochemistry and Molecular Biology, Inc. 9650 Rockville Pike, Bethesda, MD 20814-3996					
10. Owner (Do not leave blank. If the publication is owned by a corporation, give the name and address of the corporation immediately followed by the names and addresses of all stockholders owning or holding 1 percent or more of the total amount of stock. If not owned by a corporation, give the names and addresses of the individual owners. If owned by a partnership or other unincorporated firm, give its name and address as well as those of each individual owner. If the publication is published by a nonprofit organization, give its name and address.)					
Full Name American Society for Biochemistry and Molecular Biology, Inc.		Complete Mailing Address 9650 Rockville Pike Bethesda, MD 20814-3996			
11. Known Bondholders, Mortgagees, and Other Security Holders Owning or Holding 1 Percent or More of Total Amount of Bonds, Mortgages, or Other Securities. If none, check box <input checked="" type="checkbox"/> None					
Full Name		Complete Mailing Address			
12. Tax Status (For completion by nonprofit organizations authorized to mail at nonprofit rates) (Check one) The purpose, function, and nonprofit status of this organization and the exempt status for federal income tax purposes: <input checked="" type="checkbox"/> Has Not Changed During Preceding 12 Months <input type="checkbox"/> Has Changed During Preceding 12 Months (Publisher must submit explanation of change with this statement)					

PS Form 3526, September 2007 (Page 1 of 3 (Instructions Page 2)) PSN 7530-01-000-8031 PRIVACY NOTICE. See our privacy policy on www.usps.com

13. Publication Title Molecular & Cellular Proteomics		14. Issue Date for Circulation Data Below September 2008	
15. Extent and Nature of Circulation		Average No. Copies Each Issue During Preceding 12 Months	No. Copies of Single Issue Published Nearest to Filing Date
a. Total Number of Copies (Net press total)		194	170
b. Paid Circulation (By Mail and Outside the Mail)			
(1)	Mailed Outside-County Paid Subscriptions Stated on PS Form 3541 (Include paid distribution above nominal rate, advertiser's proof copies, and exchange copies)	117	120
(2)	Mailed In-County Paid Subscriptions Stated on PS Form 3541 (Include paid distribution above nominal rate, advertiser's proof copies, and exchange copies)		
(3)	Paid Distribution Outside the Mail including Sales Through Dealers and Carriers, Street Vendors, Counter Sales, and Other Paid Distribution Outside USPS®		
(4)	Paid Distribution by Other Classes of Mail Through the USPS (e.g. First-Class Mail®)		
c. Total Paid Distribution (Sum of 15b(1)-(4))		117	120
d. Free or Nominal Rate Distribution (By Mail and Outside the Mail)			
(1)	Free or Nominal Rate Outside-County Copies included on PS Form 3541	24	13
(2)	Free or Nominal Rate In-County Copies included on PS Form 3541		
(3)	Free or Nominal Rate Copies Mailed at Other Classes Through the USPS (e.g. First-Class Mail®)		
(4)	Free or Nominal Rate Distribution Outside the Mail (Carriers or other means)	23	15
e. Total Free or Nominal Rate Distribution (Sum of 15d(1)-(4))		47	28
1. Total Distribution (Sum of 15c and 15e)		164	148
2. Copies not Distributed (See Instructions to Publishers #4 (page 43))		30	22
3. Total (Sum of 15a and 2)		194	170
4. Percent Paid (15c divided by 15a times 100)		71%	81%
16. Publication of Statement of Ownership <input checked="" type="checkbox"/> If the publication is a general publication, publication of this statement is required. We will print in the September 2008 issue of this publication. <input type="checkbox"/> Publication not required.			
17. Signature and Title of Editor, Publisher, Business Manager, or Owner <i>Barbara A. Gordon, Manager</i>			Date September 22, 2008

I certify that all information furnished on this form is true and complete. I understand that anyone who furnishes false or misleading information on this form or who omits material or information requested on the form may be subject to criminal sanctions (including fines and imprisonment) and/or civil sanctions (including civil penalties).

PS Form 3526, September 2007 (Page 2 of 3)

A man in a white dress shirt and a dark, striped tie stands in the center-left of the frame. He is looking directly at the camera with a neutral expression. The background is a vibrant blue with a complex network of glowing spheres and lines, resembling a molecular or biological structure. The spheres are in various colors, including purple, green, and yellow. The overall lighting is dramatic, with the man's face and shirt highlighted against the darker background.

[JOHN R. ENGEN, Ph.D.]

**LOOKS FOR PARTNERSHIPS,
SO OTHERS CAN FIND A CURE.**

For Dr. John Engen, collaboration is key. As an Associate Professor at Northeastern University, he works with his colleagues in the Department of Chemistry & Chemical Biology and the Barnett Institute to study disease-related proteins. His ultimate goal is to share this information with drug developers, so they can create treatments for HIV and cancer. Working with Waters as a partner, he uses a range of Waters instruments, including the nanoACQUITY UPLC[®], Synapt HDMS[™], and a customized LC instrument developed with Waters. As Dr. Engen will tell you, the path to a cure runs through partnership.

HOW BIG WILL YOUR IMPACT BE?

Learn more at waters.com/engen

©2008 Waters Corporation. Waters, nanoACQUITY UPLC, SYNAPT HDMS and The Science of What's Possible are trademarks of Waters Corporation.

Waters
THE SCIENCE OF WHAT'S POSSIBLE.™

AUTHOR INDEX

- Aebersold, Ruedi, 2138, 2288
Aldrich, Richard W., 2188
Andersen, Jens S., 2107
Arnett, Diana R., 2090
Arroyo, Erin S., 2246
- Bench, Graham, 2246
Bildl, Wolfgang, 2188
Blanchette, Craig D., 2246
Bodart, Jean-François, 2229
Bodenmiller, Bernd, 2138
Boschetti, Egisto, 2254
Bouyssié, David, 2254
Bouyssie, David, 2151
Bradshaw, Ralph A., 2071
Burllet-Schiltz, Odile, 2254
- Campbell, Dave, 2138
Cappuccio, Jenny A., 2246
Cardoso, M. Cristina, 2279
Carr, Steven A., 2071
Celis, Julio E., 2071
Chromy, Brett A., 2246
Citterio, Attilio, 2254
Coleman, Matthew A., 2246
Cox, Jürgen, 2107
- Dehennaut, Vanessa, 2229
den Hertog, Jeroen, 2176
Deng, Ning, 2073
Domon, Bruno, 2138
Drews, Oliver, 2073
- Eastham, Ashley, 2270
Edelmann, Mariola J., 2215
Ellis, Christopher E., 2123
Eng, Jimmy, 2270
- Fakler, Bernd, 2188
Fletcher, Julia E., 2246
Fridman, Rafael, 2215
- Gavin, Anne-Claude, 2288
Gehlenborg, Nils, 2138
Goehler, Heike, 2279
Gonzalez de Peredo, Anne, 2151
Gonzalez de Peredo, Anne, 2254
Gouw, Joost, 2176
Guerrier, Luc, 2254
- Heck, Albert J. R., 2176, 2288
Hinz, Angela K., 2246
Hoepflich, Paul D., 2246
Holzman, Ted, 2270
- Ishida-Yamamoto, Akemi, 2151
- Jennings, Jennifer L., 2090
Jesus, Catherine, 2229
Jopling, Chris, 2176
- Katzen, Federico, 2246
Kessler, Benedikt M., 2215
Kleinhans, Regina, 2279
Kralj, Joel M., 2246
Kudlicki, Wieslaw A., 2246
Kuhn, Edward A., 2246
- López-Sánchez, Inmaculada, 2199
Larsen, Katja M., 2107
Lazo, Pedro A., 2199
Lefebvre, Tony, 2229
Lemeer, Simone, 2176
Leonhardt, Heinrich, 2279
Link, Andrew J., 2090
Li, Weiyan, 2188
Li, Xiaohai, 2073
Lu, Haojie, 2073
- Mann, Matthias, 2107
Markey, Sanford P., 2123
Martin, Daniel B., 2270
Matic, Ivan, 2107
May, Damon, 2270
McFarland, Melinda A., 2123
McIntosh, Martin, 2270
Michalski, Jean-Claude, 2229
Mohammed, Shabaz, 2176
Monsarrat, Bernard, 2151
Monsarrat, Bernard, 2254
Mortusewicz, Oliver, 2279
Mueller, Lukas N., 2138
Mueller, Markus, 2138
Muschel, Ruth J., 2215
- Nussbaum, Robert L., 2123
- Olsen, Jesper V., 2188
- Page, Adeline, 2229
Park, Kang-Sik, 2188
Peterson, Amelia, 2270
Peterson, Todd C., 2246
Ping, Peipei, 2073
- Raymond, Anne-Aurélië, 2151
Righetti, Pier Giorgio, 2254
Rothbauer, Ulrich, 2279
Rothschild, Kenneth J., 2246
Roux-Dalvai, Florence, 2254

Sanz-García, Marta, 2199
Schimmel, Joost, 2107
Schmidt, Alexander, 2138
Schulte, Uwe, 2188
Segelke, Brent W., 2246
Serre, Guy, 2151
Simó, Carolina, 2254
Simon, Michel, 2151
Slijper, Monique, 2176
Slomianny, Marie-Christine, 2229
Souda, Pete, 2073
Stella, Alexandre, 2151
Suenaga, Naoko, 2215
Sulchek, Todd A., 2246

Tabb, David L., 2090
Trimmer, James S., 2188

van Hagen, Martijn, 2107
Vercoutter-Edouart, Anne-Sophie, 2229
Vertegaal, Alfred C. O., 2107
Vilain, Jean-Pierre, 2229

Wang, Yueju, 2073
Wanker, Erich E., 2279
Weil, P. Anthony, 2090
Whitelegge, Julian, 2073

Xu, Danmei, 2215

Yang, Peng-Yuan, 2073
Yan, Jiusheng, 2188
Young, Glen W., 2073

Zanella, Alberto, 2254
Zolghadr, Kourosh, 2279
Zong, Chenggong, 2073